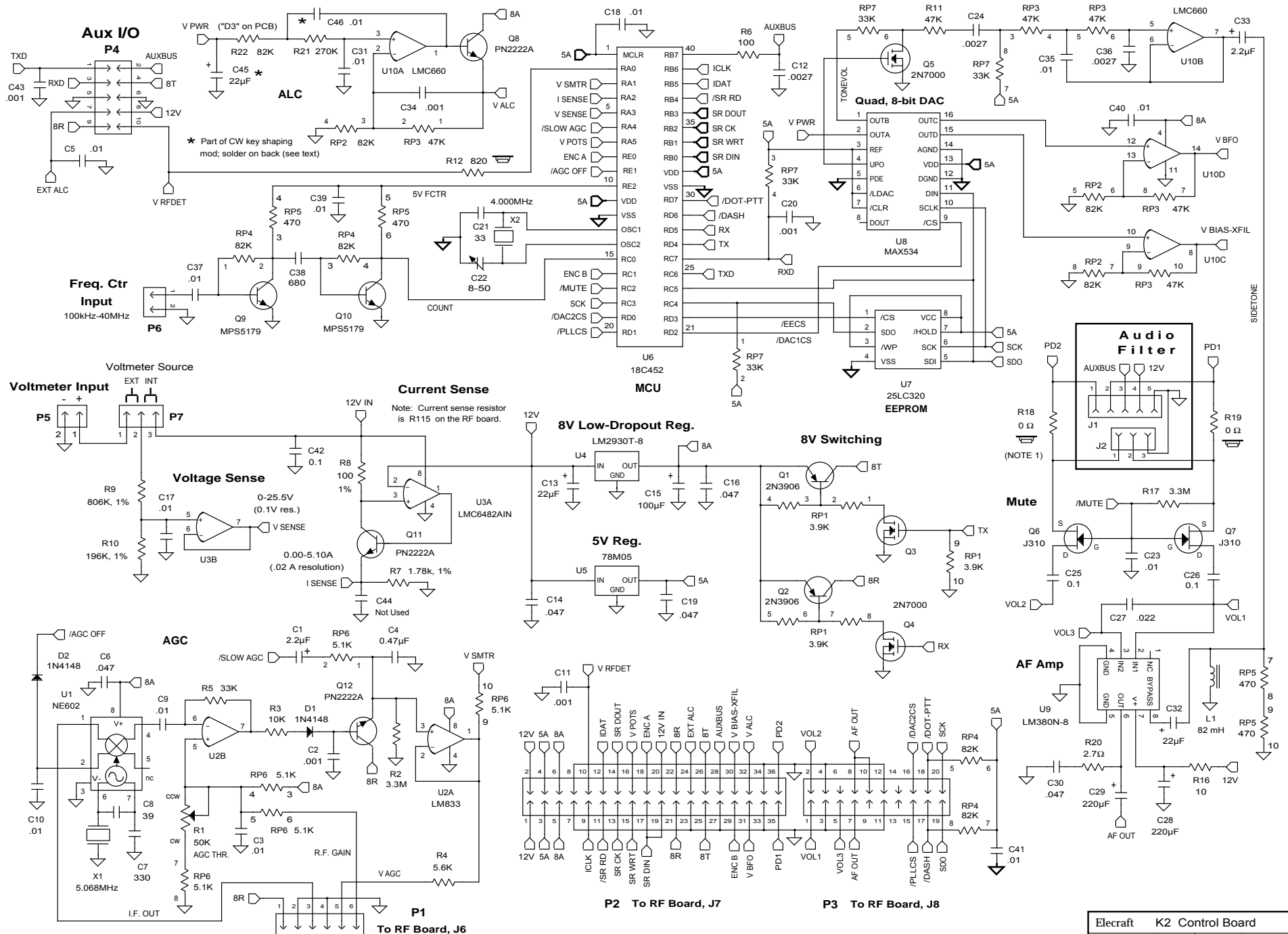


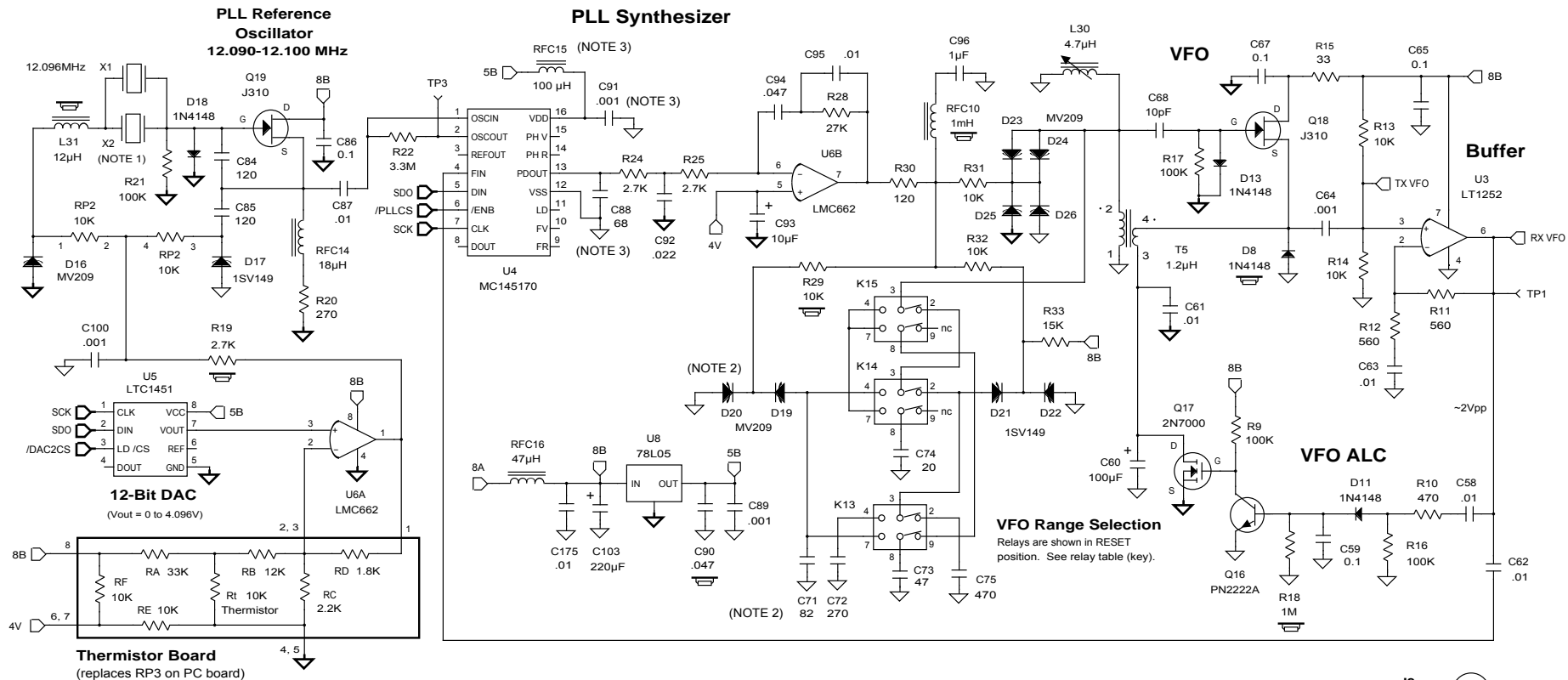
Elecraft K2 Front Panel Board			
By W. Burdick	Rev. C	Date 10/6/02	Sht. 1 of 1
E. Swartz			



NOTE 1: Jumpers are used at R18 and R19. They must be removed if the Audio Filter option is installed.

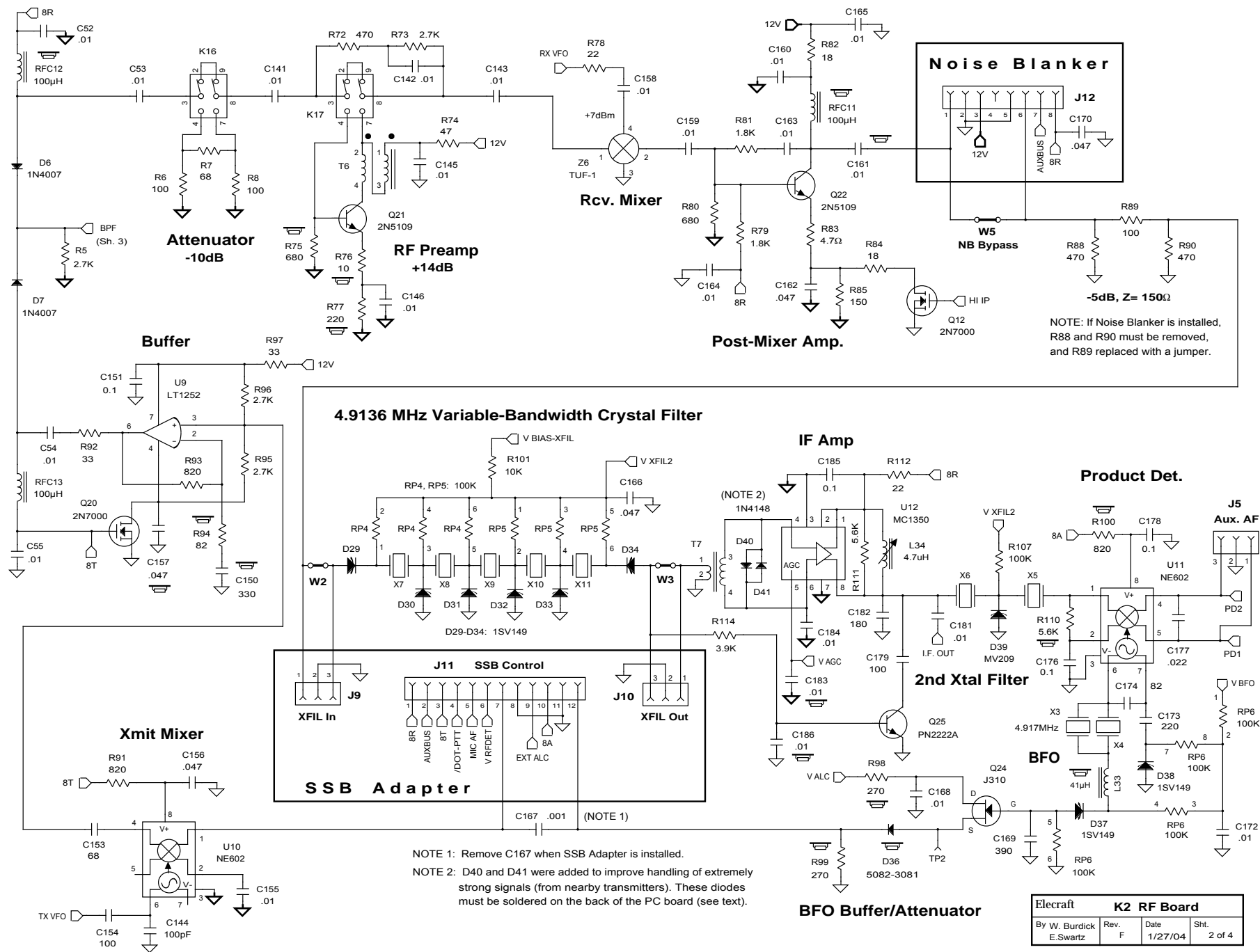
☐ = on bottom of PC board

Eleccraft K2 Control Board			
By W. Burdick	Rev. F	Date 1/27/04	Sht. 1 of 1

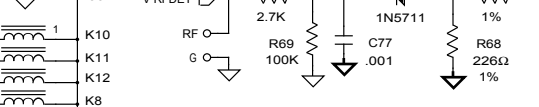
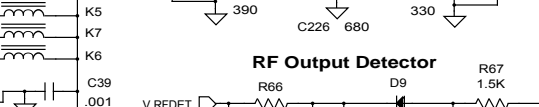
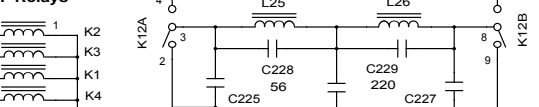
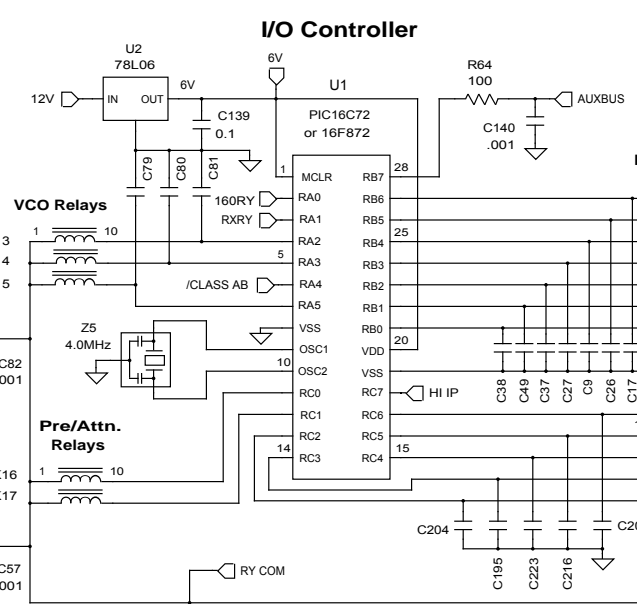
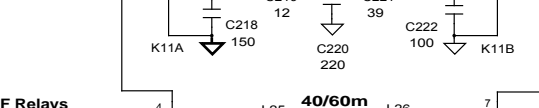
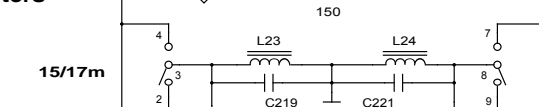
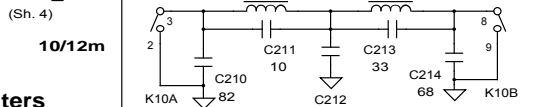
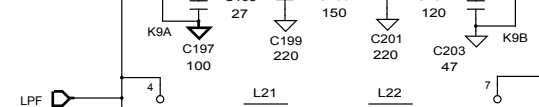
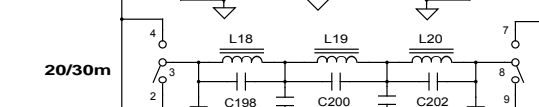
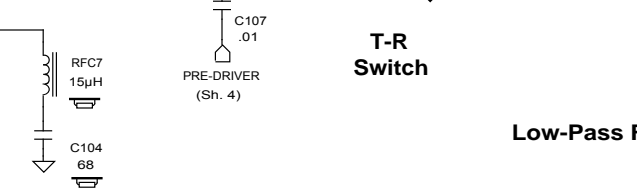
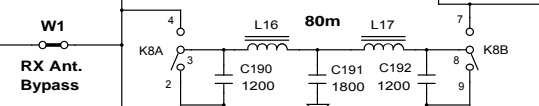
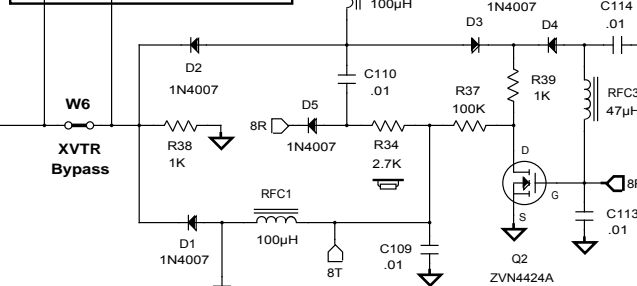
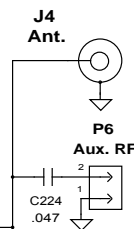
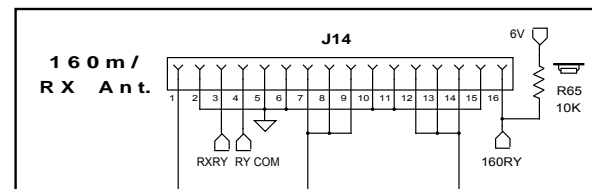
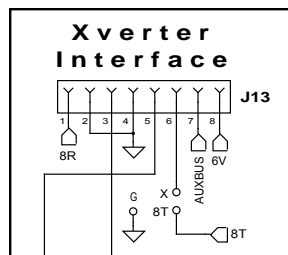
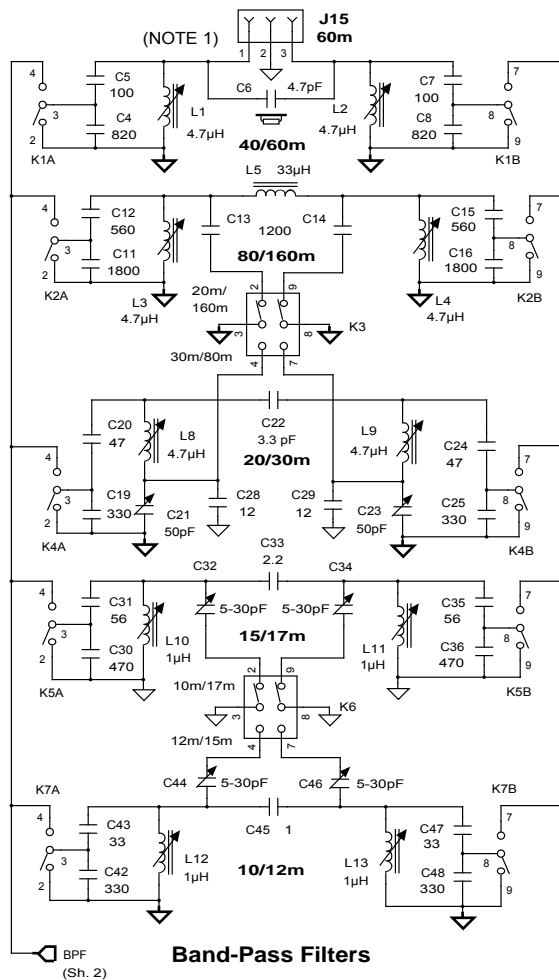


Elecraft K2 RF Board			
By W. Burdick	Rev.	Date	Sht.
E. Swartz	F	1/27/04	1 of 4

## Appendix B



Elecrafit K2 RF Board			
By W. Burdick E. Swartz	Rev. F	Date 1/27/04	Sht. 2 of 4

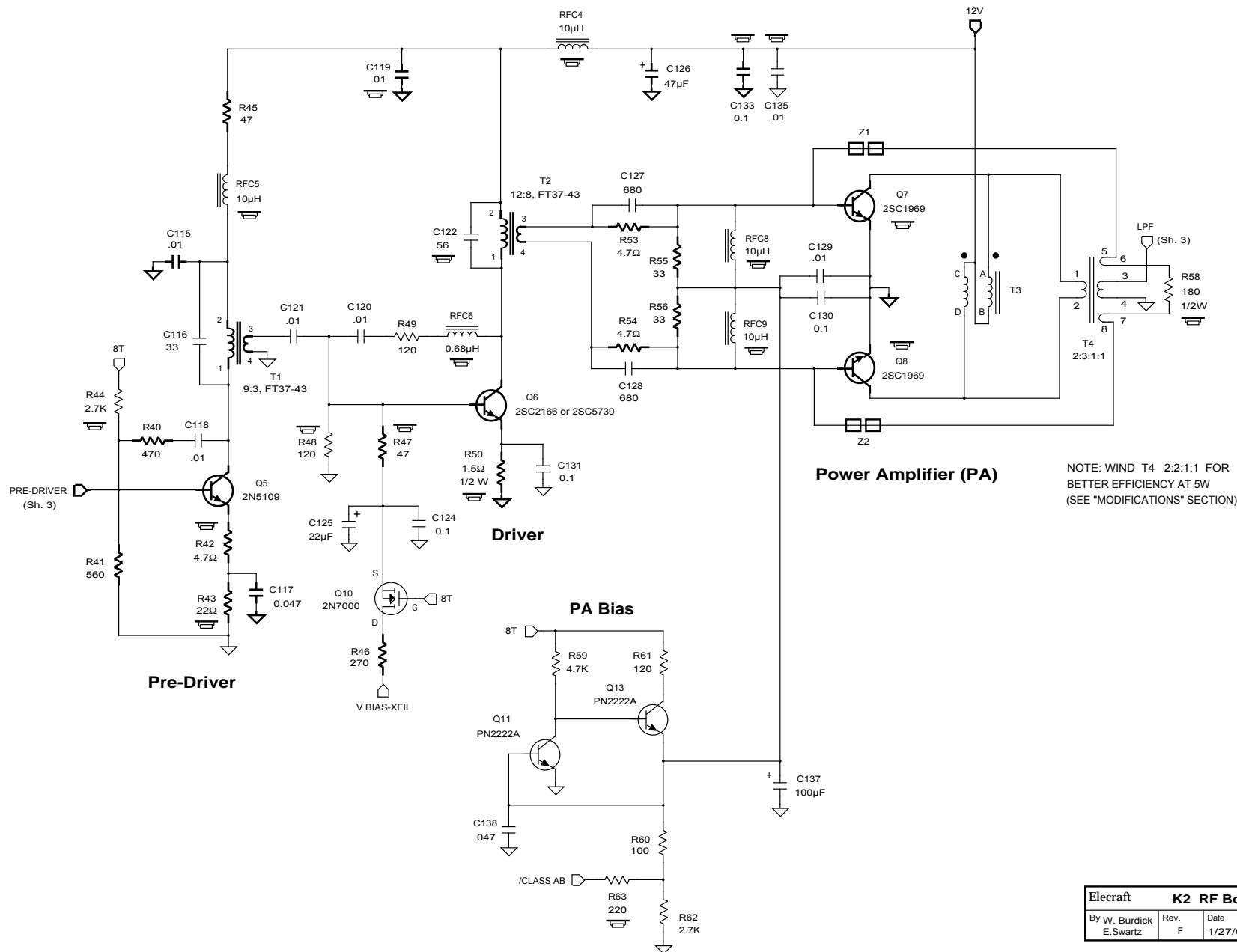


Elecraft K2 RF Board			
By W. Burdick E. Swartz	Rev. F	Date 1/27/04	Sht. 3 of 4

NOTE1: When the K60XV (transverter and 60 m) option is installed, C6 must be removed and J15 installed in its place, on the top side of the PC board.

NOTE2: Pins 5 and 6 of relays are not connected internally. However, these pins may be connected to other relay pins or to other components on either side of the PC board.

Appendix B



Elecraft K2 RF Board			
By W. Burdick E. Swartz	Rev. F	Date 1/27/04	Sht. 4 of 4

## Appendix B